

Fashion Enter Organisational Chart



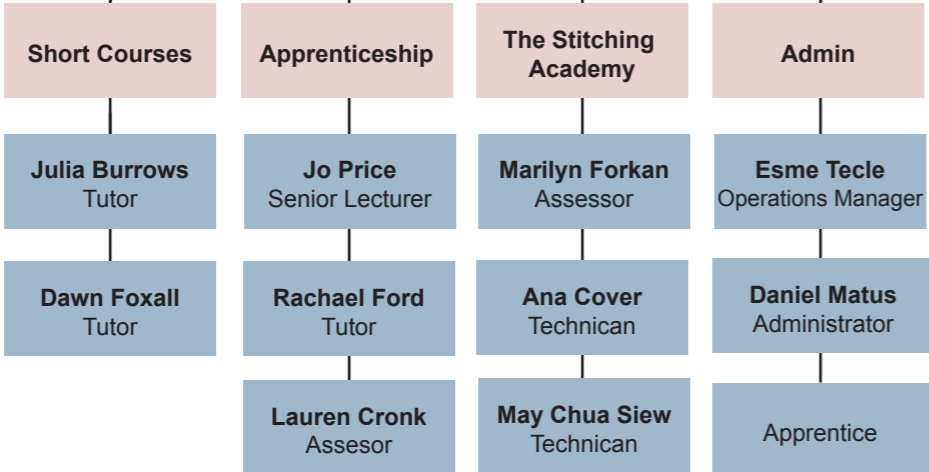
Jenny Holloway
CEO

Caroline Ash
Director

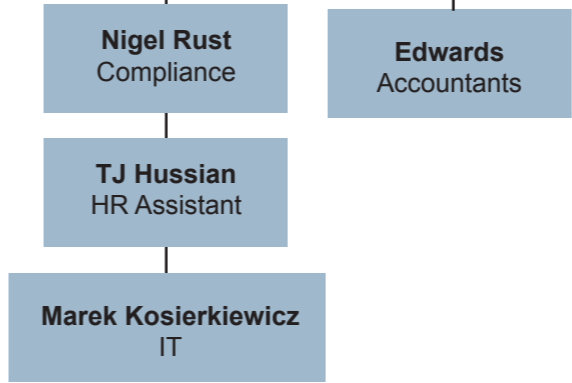
Jennifer Sutton
Director

The Fashion Technology Academy

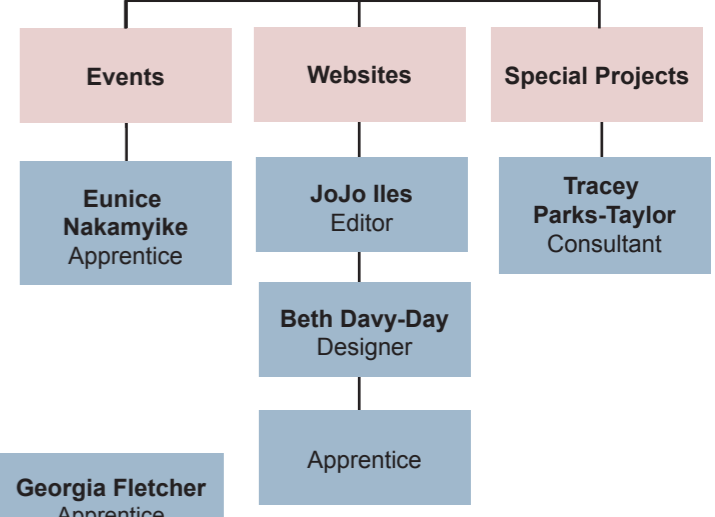
Andres Ochoa-Mikan
Head of Learning



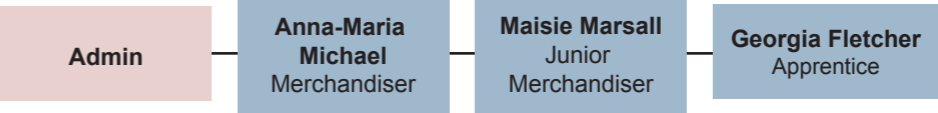
Operations



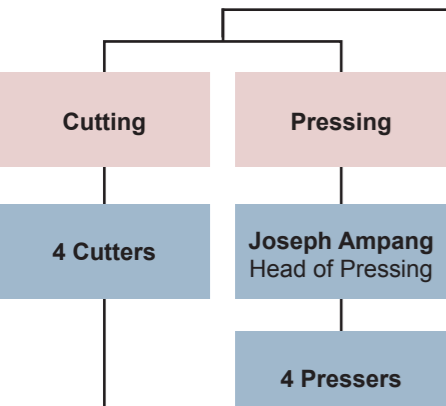
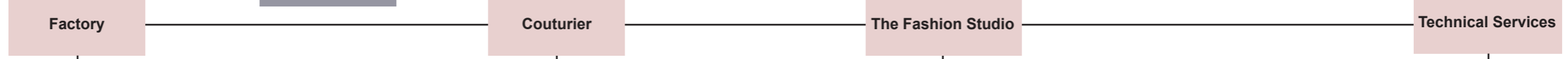
Sales and Marketing



Production

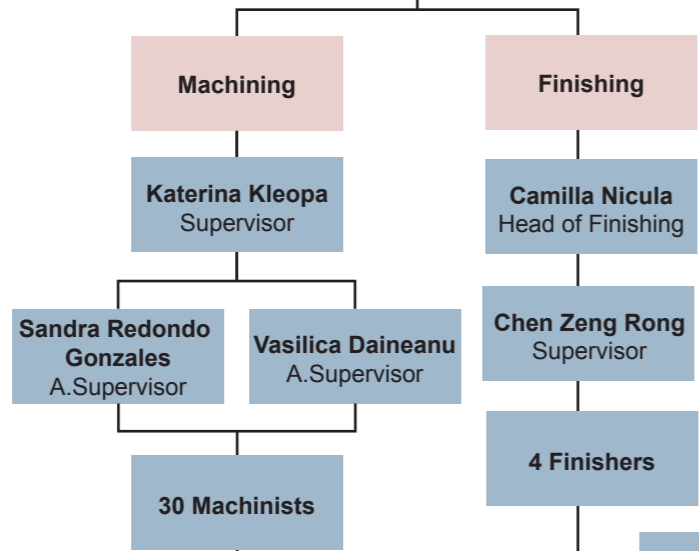


Chris Toumba
Factory Manager



Zac Holloway Trainee

Elle Argyroy Head of QC

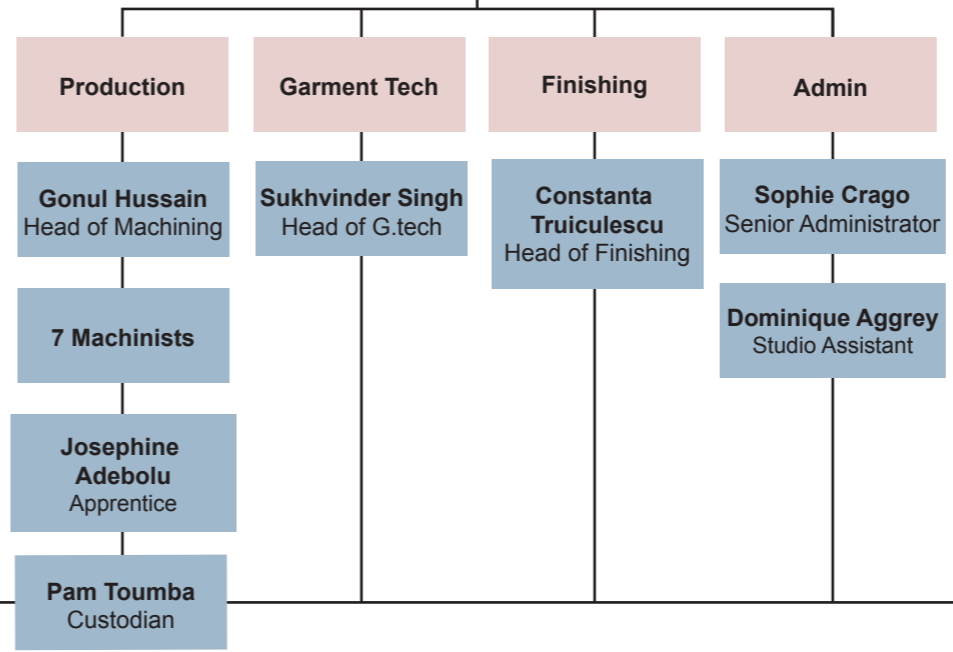


Camilla Nicula Head of Finishing

8 Machinists

Robert Taylor Chargehand

Jenny-Beth Golding Studio Manager



Lauren Loftus Head of patterns

